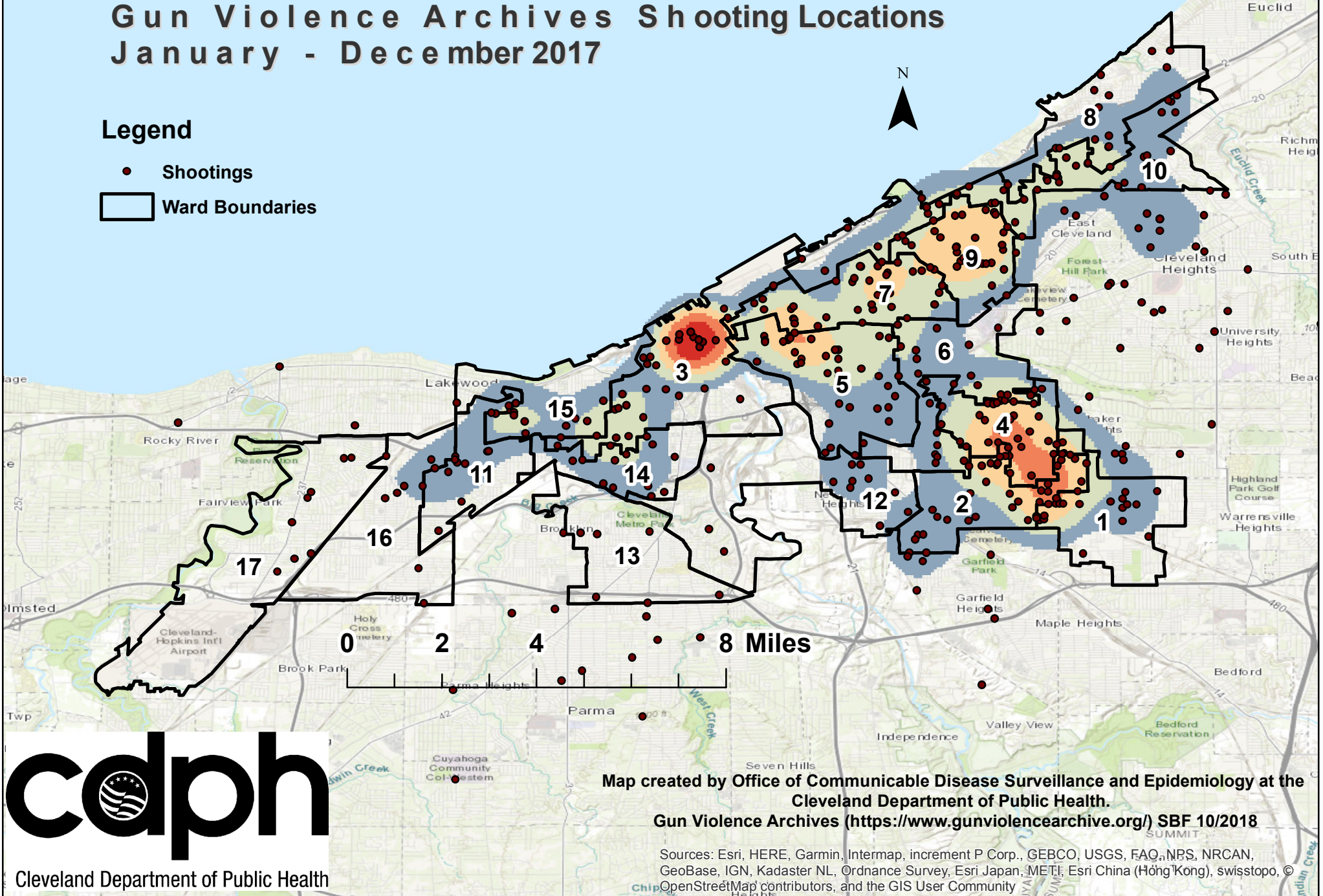


Gun Violence Archives Shooting Locations January - December 2017

Legend

- Shootings
- Ward Boundaries



Cleveland Department of Public Health

Map created by Office of Communicable Disease Surveillance and Epidemiology at the Cleveland Department of Public Health.

Gun Violence Archives (<https://www.gunviolencearchive.org/>) SBF 10/2018

Sources: Esri, HERE, Garmin, Intermap, increment P Corp., GEBCO, USGS, FAO, NPS, NRCAN, GeoBase, IGN, Kadaster NL, Ordnance Survey, Esri Japan, METI, Esri China (Hong Kong), swisstopo, © OpenStreetMap contributors, and the GIS User Community